

FOR ALL ACCOMMODATION

- + Prices are subject to provider changes
- + Minimum 4 week bookings
- + No bookings can be made prior to full payment and receipt of flight details
- + Payment at least 2 weeks prior to arrival (high season & special requests: up to 6 months in advance)

Accommodation Placement Fee for all options: \$275

Airport Pick Up: \$165

To check availability please contact enrol@ihsydney.com.au

Homestay

Living in a friendly host family is the most popular option. Most of them are usually located in the Sydney suburbs. Rooms include breakfast & dinner from Monday to Friday, plus lunch on weekends.

Standard Single Room Weekly Rate: \$310

Twinshare* Room Weekly Rate: \$265

* both students arriving together

Guardianship Weekly Rate: \$400

Extra nights \$60 per single night



Residential Accommodation

CozyStay

www.cozzystay.com.au

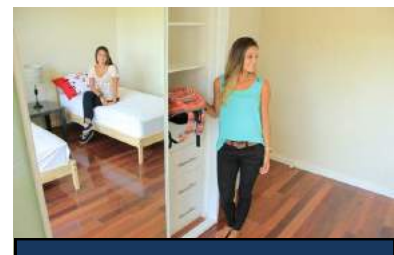
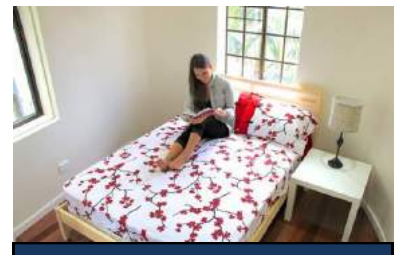
Airport transfer compulsory

Fully furnished, planned kitchens, timber floors, built-in wardrobes with full length mirrors.

- Bed linen provided.
- Laundry facilities (coin operated machines)
- Easy access to public transport. Houses are all located in Kingsford, North Sydney or Randwick.
- Free high speed internet access
- All bills included (gas, electricity and water)

Please note that when you arrive at the share accommodation you must pay a security deposit (Bond) of \$350.

Room Type	2017
Standard single	350
Twin or double room	230



Link2

www.link2.com.au

Link2 is centrally located, opposite Central Train Station. Weekly price includes utilities, cleaning 3 times per week, secure swipe card for entry, free Wifi, air conditioned bedrooms, fridge and cupboard storage, coin operated laundry facilities, comfortable lounge area, and 24 hour access to management.

Room Type	2017
Standard single	350
Twinshare	280

Bookings will need to be made 4 weeks prior to arrival.

Travel distance to IH Bondi is approximately 13 minutes by train.



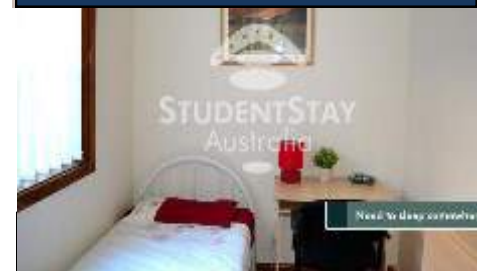
Jack's Place in Elizabeth Bay

www.furnishedproperty.com.au

- 40 single rooms, some with double beds
- Free cable Internet in every room
- Free WIFI in common areas
- Separate communal study room
- Roof-top terrace with outdoor furniture and BBQ
- Under bed storage and study desks in every room
- Secure buildings with private, lockable rooms
- Fully equipped commercial grade kitchens
- Lounge areas with flat screen TV's and Foxtel (cable TV) at no extra charge
- Separate male and female shared bathrooms
- Live in, on-site House Manager
- Close proximity to public transport

Room Type	2017
Single Room	400

Bond payment of 3 weeks' rent to be made at Furnished Property Group's office



Studios (Furnished Property Group) www.furnishedproperty.com.au

The Furnished Property Group offers studio apartments in different parts of Sydney, for example on Parramatta Road in Annandale.

Studio Type	2017
Standard Double Studio	525

Includes free internet bed linen and all bills.

Bond payment of 3 weeks' rent to be made at Furnished Property Group's office.

Studentstay Australia

www.studentstayaustralia.com

Studentstay offers residential accommodation in houses located in Allawah, Arncliffe, Burwood, Marrickville, Maroubra, Stanmore. Students are assigned to a house depending on availability and are notified 2 weeks before arrival with the details of their placement. Bookings will need to be made and fully paid 4 weeks prior to arrival.

Prices include all bills and internet
A bond of \$360 is payable in cash upon arrival.

Room Type	2017
Single Room	275
Twinshare	215

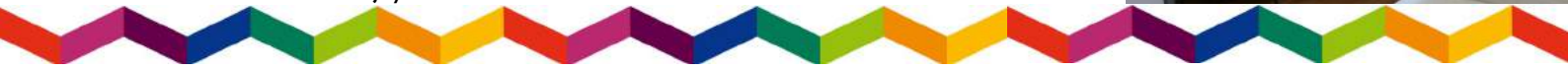
Study House

<http://www.studyhouse.com/>

Studyhouse offers consistently high standard of comfortable student accommodation. This newly renovated building is right in the heart of Sydney, 30 minute train ride to Bondi Junction.

Room Type	2017
Single Room	330
Twinshare	290

- Four house levels
- Individually separated levels with secure access, with each house being fully self-contained,
- Free Wi-Fi
- A fully-equipped, modern kitchen with oven, cook-top, microwave, toaster and kettle.
- Personal storage space in cupboards and refrigerator.
- All kitchen utensil, glasses, plates, pots and pans, and cutlery
- Polished timber floors throughout and a comfortable common area with leather sofa, wide-screen TV, DVD player, and communal iMac computer
- Sparkling clean, modern bathrooms.
- Utility expenses – water, electricity and gas – are included
- Outdoor terrace—to enjoy the sunshine.



Student Sydney Living

<http://sydneystudentliving.com>

Sydney Student Living is located about 10kms away from the Sydney city and 45 minute from Bondi Junction train ride

The bus stop is just around the corner and Burwood train station is about a 10 minute walk.

Room Type	2017
SSL Single (any en-suite room or Deluxe)	370
SSL 2 Twin share	265

- All rooms are secured with a personal electronic security access system.
- SSL offers private rooms , clean and are fully furnished (including Linen).
- Free Unlimited Wi-Fi,
- Each room features a flat screen LCD TV
- Comfortable king single bed, all bedding and room supplies, microwave, fridge, sink, overhead & under bed storage, study desk, Central heating, carpeted floors, wardrobes

